

Appendix C: Secondary data on top-priority issues, selected indicators

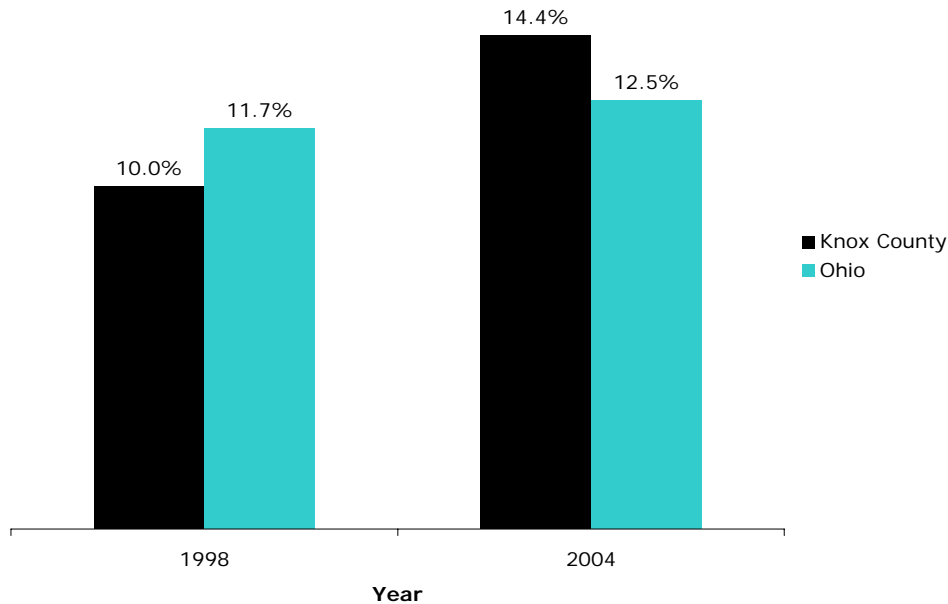
List of Tables and Figures

Health care affordability, insurance, access, and quality	3
FIGURE C1: PERCENT OF ADULTS (AGE 18 AND OLDER) UNINSURED IN KNOX COUNTY AND OHIO, 1998 AND 2004	3
TABLE C1: UNINSURED ADULTS AND CHILDREN IN KNOX COUNTY AND OHIO, 2004	3
TABLE C2: PERCENT AND NUMBER OF KNOX COUNTY HEALTH DEPARTMENT MEDICAL CLINIC CLIENTS WHO WERE UNINSURED, 2003 AND 2004	3
TABLE C3: PERCENT AND NUMBER OF KNOX COMMUNITY HOSPITAL EMERGENCY DEPARTMENT PATIENTS WHO WERE UNINSURED, 2001-2004	4
TABLE C4: KNOX COMMUNITY HOSPITAL CHARITY CARE EXPENDITURES, 2002-2005	4
TABLE C5: SELECTED INDICATORS OF ACCESS TO PRIMARY MEDICAL AND DENTAL CARE	4
Jobs, economic issues, and support for self-sufficiency (wages, benefits, unemployment, poverty, and lack of money for basic needs)	5
FIGURE C2: UNEMPLOYMENT RATE, 1997-2004, KNOX COUNTY AND OHIO.....	5
TABLE C6: MEAN HOURLY WAGES FOR KNOX COUNTY AND OHIO.....	5
FIGURE C3: PERCENT OF CHILDREN (UNDER AGE 18) IN POVERTY IN KNOX COUNTY AND OHIO, 1997-2004	6
TABLE C7: CHILD AND ADULT POVERTY AT 100% AND 200% FEDERAL POVERTY LINE IN KNOX COUNTY AND OHIO, 2004... ..	6
TABLE C8: NUMBER AND PERCENT OF KNOX COUNTY STUDENTS ELIGIBLE FOR FREE OR REDUCED-PRICE LUNCHES, BY SCHOOL DISTRICT AND SCHOOL YEAR, 2003-04 THROUGH 2005-06	7
FIGURE C4: NUMBER OF OHIO WORKS FIRST (OWF/TANF) CASES AND FOOD STAMP RECIPIENTS IN KNOX COUNTY	7
TABLE C9: AGE OF PERSONS IN THE HOUSEHOLD.....	8
TABLE C10: EMPLOYMENT STATUS AMONG ABLE-BODIED ADULTS	8
TABLE C11: BENEFITS YOU OR SOMEONE LIVING WITH YOU CURRENTLY RECEIVE.....	8
TABLE C12: "WHAT DO YOU AND YOUR FAMILY NEED IN ORDER TO NOT HAVE TO COME TO THE FOOD PANTRY?"	9
TABLE C13: "WHAT HAPPENED IN YOUR LIFE THAT CAUSED YOU TO COME TO THE FOOD PANTRY?"	10
Recreational and entertainment activities	11
FIGURE C5: PARKS AND RECREATION SITES IN KNOX COUNTY.....	11
Behavioral health (mental health, stress, emotional issues, and substance abuse).....	12
TABLE C14: SELECTED INDICATORS OF MENTAL HEALTH AND SUBSTANCE ABUSE.....	12
TABLE C15: NUMBER OF CLIENTS SERVED BY THE ALCOHOL AND DRUG FREEDOM CENTER OF KNOX COUNTY.....	12
TABLE C16: PRIMARY DRUGS REPORTED BY ALCOHOL AND DRUG FREEDOM CENTER OF KNOX COUNTY CLIENTS	12
TABLE C17: TOBACCO USE AND BINGE DRINKING	13
TABLE C18: ESTIMATED ADULT SMOKING PREVALENCE OF THE CENTRAL OHIO REGION, 2004	13
Obesity.....	14
TABLE C19: BEHAVIORAL RISK FACTORS RELATED TO OBESITY	14
TABLE C20: OVERWEIGHT AMONG CHILDREN AGED < 5 YEARS	14
FIGURE C6: OVERWEIGHT RISK LEVEL FOR KNOX COUNTY 3RD GRADERS, BY SEX.....	14
FIGURE C7: OVERWEIGHT RISK LEVEL FOR KNOX COUNTY 6TH GRADERS, BY SEX	15

Teen pregnancy, maternal and child health, and family structure	16
FIGURE C8: BIRTH RATES (BY 1,000 WOMEN) BY AGE OF MOTHER, AGES 15-19 YEARS OLD, 1998-2002	16
FIGURE C9: MATERNAL AND CHILD HEALTH INDICATORS, 1998-2002	17
TABLE C21: MARRIAGE AND FAMILY STRUCTURE, 2000.....	17
Unsafe driving habits	18
TABLE C22: TRAFFIC CRASHES IN KNOX COUNTY, 2002-2004	18
Poor access to transportation	19
TABLE C23: HOUSEHOLDS WITH NO VEHICLE, MEAN COMMUTE TIME, AND POPULATION DENSITY, 2000	19
Lack of affordable housing and substandard housing	20
TABLE C24: INCOME NEEDED TO AFFORD A TWO-BEDROOM APARTMENT AT FAIR MARKET RENT (FMR), 2005.....	20
TABLE C25: HOMEOWNERSHIP RATE, HOMEOWNERSHIP/RENTAL COSTS, AND HOUSEHOLD SIZE, 2000.....	20
TABLE C26: CHARACTERISTICS OF HOUSING UNITS, 2000	20
TABLE C27: INTERCHURCH SOCIAL SERVICES COUNTY-WIDE PROVISION OF HOMELESSNESS AND HOUSING ASSISTANCE ...	21
TABLE C28: THE SALVATION ARMY OF MOUNT VERNON'S PROVISION OF HOMELESSNESS AND HOUSING ASSISTANCE	21
TABLE C29: KNOX METROPOLITAN HOUSING AUTHORITY SECTION 8 HOUSING CHOICE VOUCHER PROGRAM RECIPIENTS AND WAITING LIST, 2001-2005.....	21
Family violence, abuse of children and adults, and juvenile delinquency ..	22
FIGURE C10: REPORTS OF CHILD ABUSE AND NEGLECT IN KNOX COUNTY, 1995-2003	22
TABLE C30: USE OF NEW DIRECTIONS DOMESTIC VIOLENCE SHELTER, 2002-2006	22
TABLE C31: DOMESTIC VIOLENCE REPORTS AND CHARGES IN KNOX COUNTY, 1998-2005.....	23
TABLE C32: OFFENSES COMMITTED BY JUVENILES, 2002-2005.....	23

Health care affordability, insurance, access, and quality

Figure C1: Percent of adults (age 18 and older) uninsured in Knox County and Ohio, 1998 and 2004



Source: Ohio Family Health Survey, Ohio Department of Job and Family Services, 1999 and 2005

Table C1: Uninsured adults and children in Knox County and Ohio, 2004

	Children (ages 0-17)		Adults (ages 18 and older)	
	Percent	Estimated Number	Percent	Estimated Number
Knox County	2.1%	300	14.4%	6,200
Ohio	5.4%		12.5%	

Source: Ohio Family Health Survey, Ohio Department of Job and Family Services, 2005

Table C2: Percent and number of Knox County Health Department Medical Clinic clients who were uninsured*, 2003 and 2004

	Number Uninsured	Percent of all medical clinic clients
2003	733	49.8%
2004	781	51.9%

*Self-pay clients using the sliding fee-scale

Source: Knox County Health Department, 2005

Table C3: Percent and number of Knox Community Hospital Emergency Department patients who were uninsured, 2001-2004

	Number Uninsured	Percent of all ED patients
2001	2,926	13%
2002	2,858	12%
2003	3,222	13%
2004	3,774	16%

Source: Knox Community Hospital, 2005

Table C4: Knox Community Hospital charity care expenditures, 2002-2005

	Amount, in millions
2002	\$1.904
2003	\$2.589
2004	\$2.774
2005	\$3.241

Source: Knox Community Hospital, 2006

Table C5: Selected indicators of access to primary medical and dental care*

	Knox County	Ohio
Primary medical care		
Ratio of Population to Primary Care Physicians (2002)	1,437:1	852:1
Children eligible for Medicaid >11 months and under age 19 with at least one primary care visit in a year (2002)	78.5%	66.7%
Adults eligible for Medicaid >11 months and age 19 and older with at least one primary care visit in a year (2002)	69.1%	71.6%
Primary dental care		
Ratio of Population to Primary Care Dentists (2002)	2,436:1	2,229:1
Children age 3 through 18 who are long-term Medicaid eligibles with at least one dental claim in a year (2002)	56.7%	42.8%
Adults age 19 and older who are long-term Medicaid eligibles with at least one dental claim in a year (2002)	41.3%	34.5%

Source: Ohio Department of Health. Primary Care County Profile: <http://www2.odh.ohio.gov/data/datamain.htm>

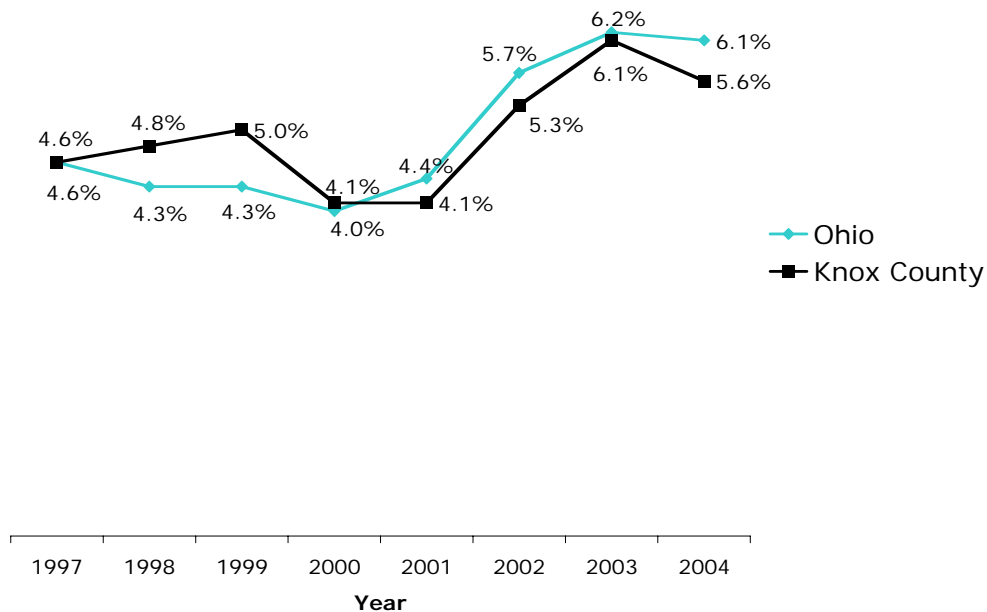
*The complete county profile, including references, is included in Appendix D.

For additional data on health care access, health statistics, and public safety, see:

- The complete ODH Primary Care Profile for Knox County in Appendix D
- Knox County Health Department, 2004 Health Assessment, selected results in Appendix D
- Knox County Health Department, 2005 Knox County Fair Survey results in Appendix D
- The Ohio Department of Health Information Warehouse at <http://dwhouse.odh.ohio.gov/>

Jobs, economic issues, and support for self-sufficiency (wages, benefits, unemployment, poverty, and lack of money for basic needs)

Figure C2: Unemployment rate, 1997-2004, Knox County and Ohio



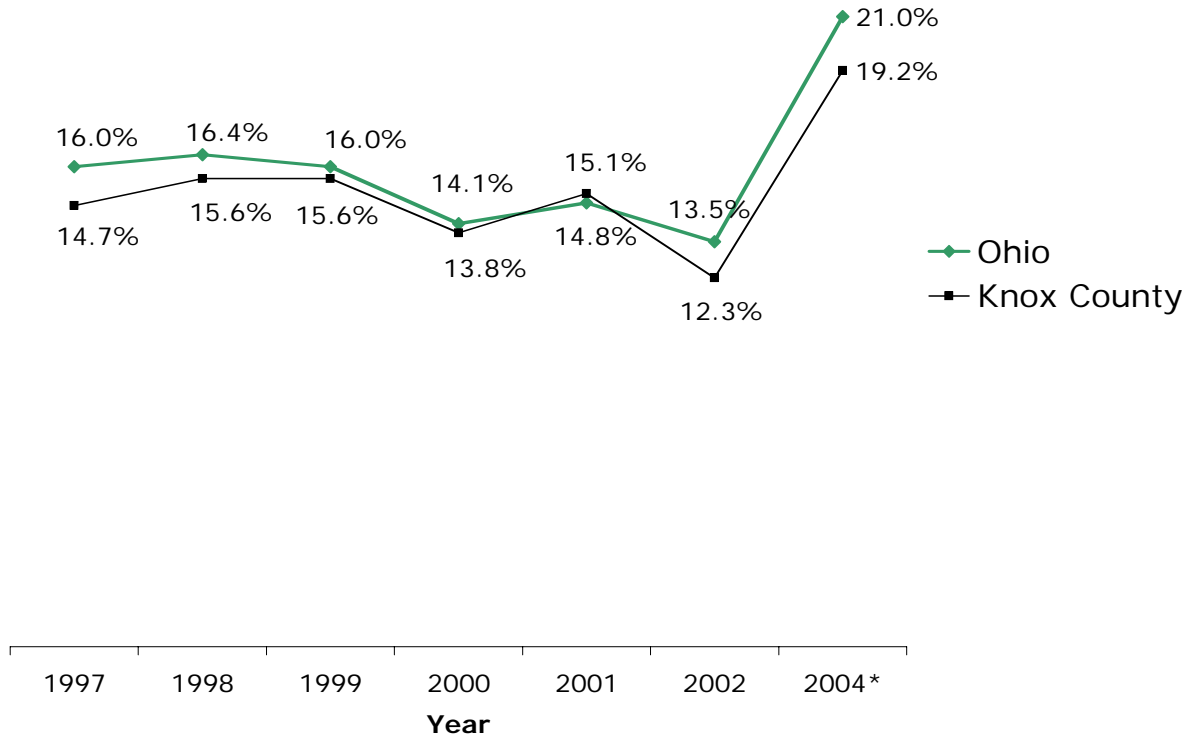
Source: Bureau of Labor Statistics, Local Area Unemployment Statistics (LAUS) data, 2005

Table C6: Mean hourly wages for Knox County and Ohio, 2004 (for occupations with 250 or more employees in 2004)

	Knox County	Ohio
Combined food preparation and serving workers	\$7.19	\$7.32
Cutting, punching, and press machine setters	\$13.88	NA
Janitors and cleaners, except maids and housekeeping	\$11.19	\$10.47
Lathe and turning machine tool setters, operators	\$17.15	NA
Licensed Practical and Licensed Vocational nurses	\$15.88	NA
Office clerks, general	\$9.68	\$11.14
Retail salespersons	\$9.34	\$10.70
Secretaries, except legal, medical, and executive	\$11.32	\$12.58
Team assemblers	\$13.31	\$14.02

Source: Workforce Informer, Ohio LMI; Compiled by Ohio State University Extension Service Data Center, www.osuedc.org

Figure C3: Percent of children (under age 18) in poverty in Knox County and Ohio, 1997-2004 (100% Federal Poverty Line)



Source: *2004 data are from the ODJFS Ohio Family Health Survey, Health Policy Institute of Ohio Health Data Brief, May 25, 2005; 1997-2002 data are from the US Census Bureau.

Table C7: Child and adult poverty at 100% and 200% Federal Poverty Line in Knox County and Ohio, 2004

	Knox County		Ohio
	Number	Percent	Percent
Children (ages 0-17)			
100% FPL	2,602	19.2%	21.0%
200% FPL	6,924	51.1%	43.8%
Adults (ages 18 and up)			
100% FPL	7,531	19.4%	15.6%
200% FPL	16,858	43.5%	36.5%

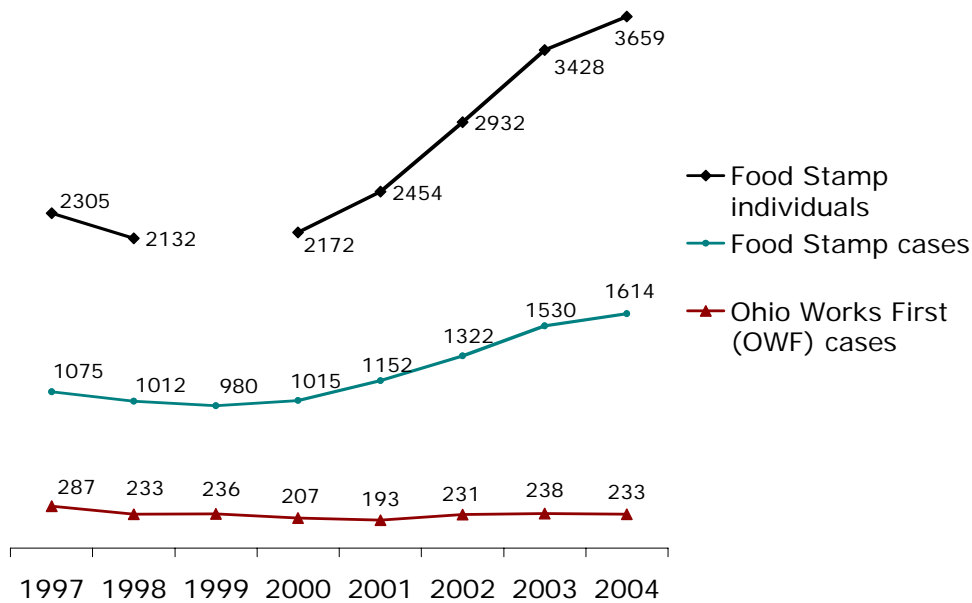
Source: 2004 ODJFS Ohio Family Health Survey, Health Policy Institute of Ohio Health Data Brief, May 25, 2005

Table C8: Number and percent of Knox County students eligible for free or reduced-price lunches, by school district and school year, 2003-04 through 2005-06

School district	2003-04		2004-05		2005-06	
	Number	Percent	Number	Percent	Number	Percent
East Knox	344	30%	291	24%	422	34%
Danville	214	35%	235	36%	263	41%
Mount Vernon	1,256	34%	1,243	34%	1,310	36%
Centerburg	128	11%	134	12%	158	14%
Fredericktown	227	21%	235	22%	261	24%
All school districts in Knox County combined	2,169	28%	2,138	27%	2,414	31%

Source: Data were obtained directly from each school district.

Figure C4: Number of Ohio Works First (OWF/TANF) cases and Food Stamp recipients (cases and individuals) in Knox County, December counts, 1997-2004



Note: The number of Food Stamp individuals for 1999 is not available.
Source: Knox County Department of Job and Family Services, 2005

Selected results of the Ohio Association of Second Harvest Foodbanks' 2003 and 2004 "No Name, Please! Survey"

Ohio Association of Second Harvest Foodbanks conducts an annual survey of individuals seeking assistance at food pantries throughout Ohio. Interchurch Social Services is the survey sight in Knox County. Data reported here are from surveys conducted in July-September 2003 and 2004. For complete survey results for Ohio, go to www.oashf.org.

Table C9: Age of persons in the household (food pantry recipients)

	2003		2004	
	Knox County	Ohio	Knox County	Ohio
0-12 months	3.4%	3.5%	4.6%	42% age 17 or younger
1-17 years	43.0%	39.2%	49.1%	
18-59 years	50.9%	49.0%	45.1%	50%
Over 60	2.6%	8.5%	1.1%	8%
Total persons in household	381	8,120	452	NA

Source: Knox County data were provided directly by Ohio Association of Second Harvest Foodbanks. Ohio data are reported in "Hunger in Ohio 2003" and "The Faces of Hunger in Ohio 2004," www.oashf.org.

Table C10: Employment status among able-bodied adults (total adults, excluding the retired and disabled*; food pantry recipients)

	2003		2004	
	Knox County	Ohio	Knox County	Ohio
Full time	26.0%	21.9%	24.4%	21%
Part-time	13.9%	13.1%	15.9%	14%
Sometimes	12.0%	7.0%	8.5%	12%
Not working	48.1%	57.8%	51.1%	53%
Total responses	158	8,802	176	8,230

*In 2003, 21.3% of Knox County respondents were disabled and 2.4% were retired. In 2004, 18.5% were disabled and 0% were retired.

Source: Knox County data were provided directly by Ohio Association of Second Harvest Foodbanks. Ohio data are reported in "Hunger in Ohio 2003" and "The Faces of Hunger in Ohio 2004," www.oashf.org.

Table C11: Benefits you or someone living with you currently receive (Knox County food pantry recipients)

	2003	2004
OWF (Ohio Works First, "welfare")	10%	20%
WIC/CSFP	19%	25%
Food Stamps	62%	73%
Medicaid	72%	72%
Child Care	3%	2%
Total households responding	95	96

Source: Ohio Association of Second Harvest Foodbanks, *No Name, Please!* Survey data for Knox County

Table C12: “What do you and your family need in order to not have to come to the food pantry?” (Knox County food pantry recipients)

	2003	2004
Better job with higher wages	45.0%	52.7%
Full-time job	45.0%	44.5%
Easier access to food stamps	39.4%	20.0%
Affordable housing	28.4%	25.5%
Energy/utility assistance	26.6%	30.9%
Reliable transportation	16.5%	18.2%
Education or job training	15.6%	21.8%
Medical insurance	12.8%	18.2%
Budgeting assistance	11.9%	6.4%
Child support	11.0%	22.7%
Additional income	10.1%	36.4%
Affordable child care	5.5%	12.7%
Accessible public welfare benefits	1.8%	6.4%
Increase Social Security	NA	15.5%
Increase retirement benefits	NA	0%
Total households responding	109	110

Source: Ohio Association of Second Harvest Foodbanks, *No Name, Please!* Survey data for Knox County

Table C13: “What happened in your life that caused you to come to the food pantry?” (Knox County food pantry recipients)

	2003	2004
Ran out of food	67.2%	44.3%
Ran out of money to buy food	59.7%	45.3%
Ran out of food stamps	31.9%	30.2%
Lost my job/became unemployed/laid off	25.2%	34.9%
High housing/utility costs	NA	34.0%
Became disabled/ to sick to work	24.4%	30.2%
Divorce or separation	16.0%	16.0%
Benefits cut or sanctioned	15.1%	14.2%
More people living in my household	6.7%	9.4%
Suffering from mental health problems	6.7%	11.3%
Seasonal worker	6.7%	6.6%
No transportation to the grocery	5.0%	7.5%
Spent most of income on medicine	5.9%	5.7%
Moved looking for employment	4.2%	10.4%
Recent or past incarceration	4.2%	1.9%
Caring for a disabled child/adult	3.4%	8.5%
High medical spend down	2.5%	5.7%
Grandparent/relative taking care of someone else's children	1.7%	3.8%
Problems with my Ohio Direction Card	0.8%	5.7%
Homeless	NA	5.7%
Loss due to fire or natural causes	NA	0.9%
Widowed	NA	0.9%
Total households responding	119	106

Source: Ohio Association of Second Harvest Foodbanks, *No Name, Please!* Survey data for Knox County

For additional data on economic issues, employment, and poverty, go to:

- The Ohio State University Extension Data Center at www.osuedc.org
- Annie E. Casey Foundation, Kids Count CLIKS (County-City-Community Level Information on Kids) at www.aecf.org/cgi-bin/cliks.cgi
- Children’s Defense Fund-Ohio at www.cdfohio.org
- United States Census Bureau at www.census.gov
- Ohio Workforce Informer at www.ohioworkforceinformer.org
- North Central Ohio Regional Development Alliance at www.ncorda.com

Behavioral health (mental health, stress, emotional issues, and substance abuse)

Table C14: Selected indicators of mental health and substance abuse*

	Knox County	Ohio
Treatment rate per 1,000 children for Serious Emotional Disturbance (SED) (2001-2003)	14	16
Treatment rate per 1,000 adults age 18 and older for Serious Emotional Disturbance (SED) (2001-2003)	8	8
Number of days in past 30 days that adults age 18 and older felt sad/depressed (2001-2003)	3.3	3.2
Adults age 18 and older who drank five or more drinks on one or more occasions in the past month (1999-2003)	11.4%	14.9%

*The complete county profile, including references, is included in Appendix D.

Source: Ohio Department of Health, Primary Care County Profile: <http://www2.odh.ohio.gov/data/datamain.htm>

For additional data on mental health access and services, see:

- Knox County Health Department, 2004 Health Assessment, selected results in Appendix D
- Ohio Department of Mental Health data at www.dwcubes.mh.state.oh.us

Table C15: Number of clients served by the Alcohol and Drug FREEDOM CENTER of Knox County, 2002-2005 (adults and youth)

Year	Total clients served	New clients
2002	1,127	603
2003	1,203	680
2004	1,229	740
2005	1,400	1,009

Source: Alcohol and Drug FREEDOM CENTER of Knox County, 2006

Table C16: Primary drugs* reported by Alcohol and Drug FREEDOM CENTER of Knox County clients (behavioral health admissions in 2005)

Primary drug	Number of clients	Average age of first use, in years
Alcohol	657	16
Marijuana/hashish	217	14
Other narcotic analgesics	48	29
Crack	35	27
Heroin/morphine	19	23
Other cocaine	18	16
Amphetamine	12	22
Methamphetamine	11	19
Oxycodon	8	21

*For most common primary drugs

Source: Alcohol and Drug FREEDOM CENTER of Knox County, 2006

Table C17: Tobacco use and binge drinking

	Knox County	Ohio
Births to mothers who smoked (2002) ₁	20.9% (153 births)	17.9%
Current cigarette smokers ₂ (1999-2001)	25.9% (regional estimate)	27.2%
Binge drinking ₂ (1999-2000)	11.4% (regional estimate)	14.9%

Sources: 1) Ohio Department of Health, Center for Vital and Health Statistics; 2) 1999-2001 Behavioral Risk Factor Survey, Knox County data, Ohio Department of Health, <http://dwhouse.odh.ohio.gov/>

Table C18: Estimated adult smoking prevalence of the Central Ohio Region*, 2004

	Central Region*	Ohio
Smoking Prevalence		
Current	27.8%	25.9%
Former	18.0%	22.1%
Never	54.2%	52.0%
Current smoking prevalence by sex		
Male	29.6%	27.3%
Female	26.3%	24.6%
Current smoking prevalence by race		
White	26.2%	25.3%
Black	34.0%	31.0%
Current smoking prevalence by age group		
18-24	35.8%	33.4%
25-34	28.1%	30.4%
35-44	31.1%	31.8%
45-54	29.9%	30.4%
55-64	30.2%	20.6%
65+	9.4%	8.8%

*Central Ohio includes Marion, Morrow, Knox, Union, Franklin, Madison, Delaware, Licking, Pickaway, and Fairfield Counties.

Source: 2004 Behavioral Risk Factor Surveillance System. Provided directly from the Ohio Department of Health, Chronic Disease and Behavioral Epidemiology, Bureau of Health Surveillance-Prevention, 2006.

For additional data on tobacco use in Knox County, including survey results from Knox County youth, contact Judy Divelbiss, Knox Out Tobacco Program Manager, Knox County Health Department, 740-392-2200 or jdivelbiss@knoxhealth.com.

Obesity

Table C19: Behavioral risk factors related to obesity

	Knox County	Ohio
Adult obesity (20+ years) (1999-2001)	17.9%	22.0%
No leisure time physical activity (1999-2001)	35.0%	37.0%
Regular physical activity (1998-2000)	11.5%	12.8%
Fruit and vegetable consumption (5 a day) (1999-2001)	24.3%	23.6%

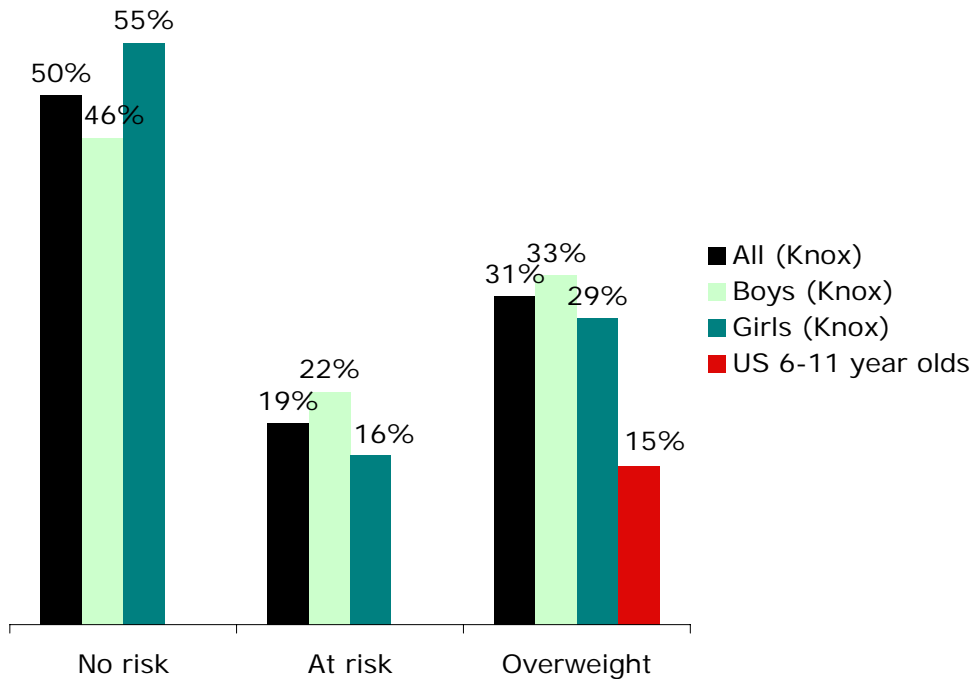
Source: Ohio Department of Health, 1999-2001 Behavioral Risk Factor Survey, county profiles

Table C20: Overweight among children Aged < 5 years (2000-2002 Pediatric Nutrition Surveillance)

	Knox County	Ohio
Overweight (< 5 years)	13.9%	11.8%
At risk for overweight: BMI 85 th -<95 th percentile/ (> 2 years)	17.5%	14.3%
Overweight: > 95 th percentile (> 2 years)	11.9%	11.0%

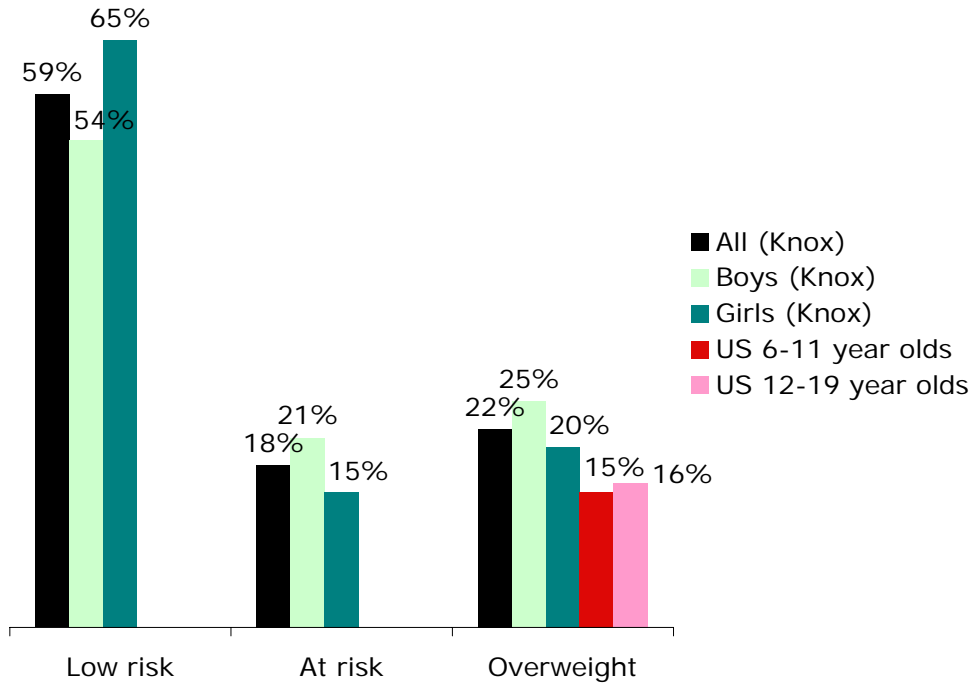
Source: 2002 Pediatric Nutrition Surveillance System, www.dwhouse.odh.ohio.gov

Figure C6: Overweight risk level for Knox County 3rd graders, by sex (n=555), with comparison to US 6-11 year olds (1999-2000, CDC)



Source: Baseline BMI measurements collected February-March 2004 at 12 elementary schools by the Knox County Health Department. Reported in *Get R.E.A.L. (Right Eating and Active Lifestyle) Childhood Prevention Project: Evaluation Report*, Owl Creek Consulting and Knox County Health Department, January 2005.

Figure C7: Overweight risk level for Knox County 6th graders, by sex (n=287), with comparison to US 6-11 and 12-19 year olds (1999-2000, CDC)

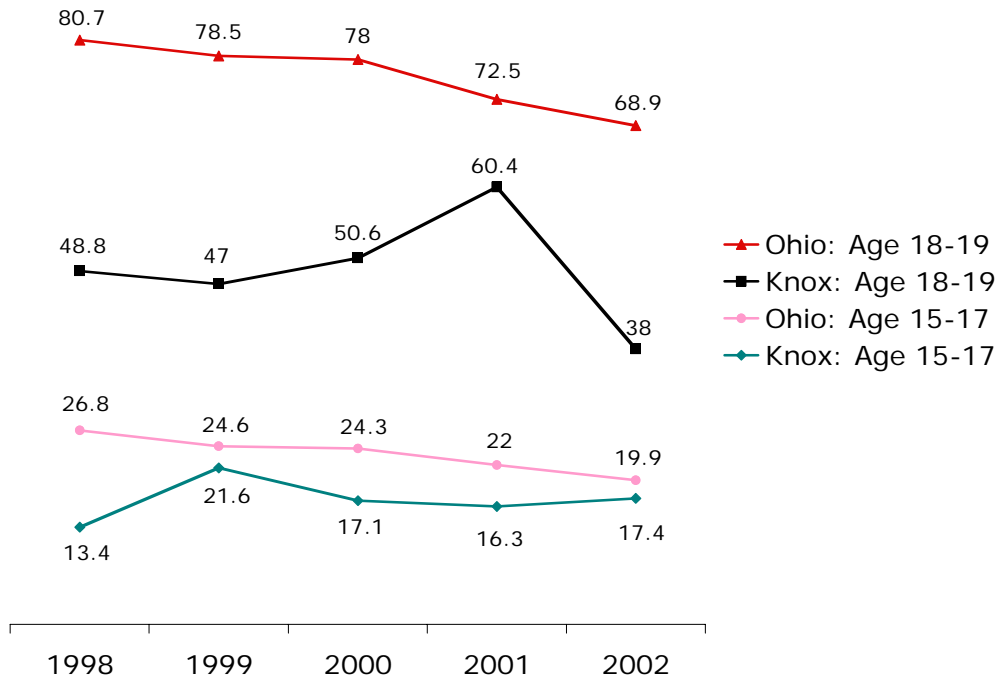


Source: Baseline BMI measurements collected February-March 2004 at Mount Vernon Middle School by the Knox County Health Department. Reported in *Get R.E.A.L. (Right Eating and Active Lifestyle) Childhood Prevention Project: Evaluation Report*, Owl Creek Consulting and Knox County Health Department, January 2005.

For more information about childhood obesity in Knox County, contact Caree McAfee or Pam Palm, Knox County Health Department, 740-392-2200, cmcafee@knoxhealth.com, or ppalm@knoxhealth.com.

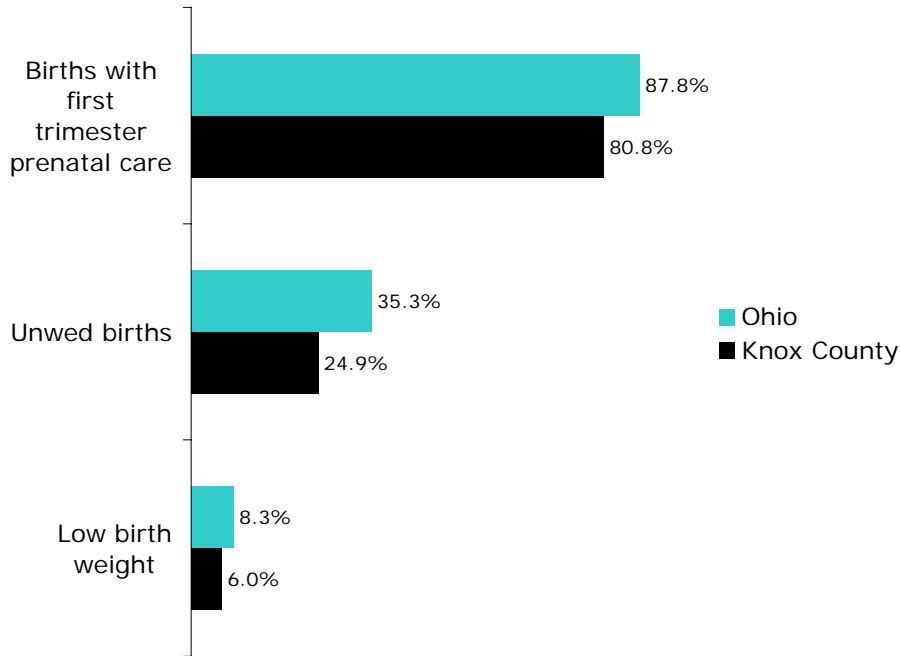
Teen pregnancy, maternal and child health, and family structure

Figure C8: Birth rates (by 1,000 women) by age of mother, ages 15-19 years old, 1998-2002



Source: Ohio Department of Health Center for Vital Statistics, www.dwhouse.odh.ohio.gov

Figure C9: Maternal and child health indicators, 1998-2002



Source: Ohio Department of Health Center for Vital Statistics, www.dwhouse.odh.ohio.gov

Table C21: Marriage and family structure, 2000

	Knox County		Ohio
	Number	Percent	Percent
Marital status (population 15 years and over)			
Never married	10,470	24.2%	26.2%
Now married, except separated	25,590	59.0%	54.5%
Separated	523	1.2%	1.6%
Widowed	2,883	6.7%	7.1%
Divorced	3,875	8.9%	10.6%
Households with children			
Single-parent households with own children	2,427	18.0%	24.6%
Households with own children under age 6	4,036	--	--
All parents in labor force	2,303	57.1%	62.1%
No parents in labor force	276	6.8%	9.5%
Grandparents as caregivers			
Grandparent living in household with one or more own grandchildren under 18 years	517	--	--
Grandparent responsible for grandchildren (among households with grandparent and own grandchildren)	135	26.1%	46.4%

Source: US Census Bureau, 2000 Census; and, KIDSCOUNT Census Data Online, Annie E. Casey Foundation

Unsafe driving habits

Table C22: Traffic crashes in Knox County, 2002-2004

	2002	2003	2004
Total crashes (all)	1,438	1,477	1,496
Deaths	9	9	5
Injuries	377	442	474
Total alcohol-related crashes	73	94	88

Source: Ohio Traffic Crash Facts, Ohio Department of Public Safety

Poor access to transportation

Table C23: Households with no vehicle, mean commute time, and population density, 2000

	Knox County	Ohio
Households with no vehicle available	6.0% (1,191 households)	8.6%
Mean travel time to work (workers age 16+)	25.8 minutes	22.9 minutes
Persons per square mile	103.4 persons	277.3 persons

Source: US Census Bureau, State and County FactFinder from 2000 Census

Lack of affordable housing and substandard housing

Table C24: Income needed to afford a two-bedroom apartment at Fair Market Rent (FMR), 2005

	Knox County	Ohio
Fair Market Rent (FMR for 2-bedroom apartment)	\$545	\$631
Annual income needed to afford ¹ two-bedroom FMR	\$21,800	\$25,257
Hourly wage needed to afford two-bedroom FMR (at 40 hours per week)	\$10.48	\$12.14
Work hours per week necessary at minimum wage to afford two-bedroom FMR	81 hours	94 hours
Estimated percent of renters unable to afford two-bedroom FMR ²	39%	44%

Notes: 1) "Affordable" rents represent the generally accepted standard of spending not more than 30% of income on housing costs; 2) Estimated by comparing the percent of renter median household income required to afford the two-bedroom FMR to the percent distribution of renter household income as a percent of the median within the state, as measured using 2003 American Community Survey Public Use Microsample data.

Source: *Out of Reach 2005*, National Low Income Housing Coalition, www.nlihc.org

Table C25: Homeownership rate, homeownership/rental costs, and household size, 2000

	Knox County	Ohio
Homeownership rate	76%	69%
Median value of owner-occupied housing units	\$92,100	\$103,700
Median monthly owners cost (for owner-occupied housing units)	\$838	\$963*
Median monthly owners cost as a percentage of household income	20.7%	NA
Median gross rent	\$446	\$515
Median gross rent as percentage of household income in 1999	22.0%	NA
Average household size of owner-occupied unit	2.63	2.62
Average household size of renter-occupied unit	2.31	2.19

*Among housing units with mortgages

Source: US Census Bureau, State and County FactFinder from 2000 Census

Table C26: Characteristics of housing units, 2000

	Knox County		Ohio
	Number	Percent	Percent
Total number of housing units	21,793	--	--
Occupied housing units	19,975	91.7%	92.9%
Owner occupied	15,116	75.7%	69.1%
Renter occupied	4,859	24.3%	30.9%
Vacant housing units	1,818	8.3%	7.1%
Housing units built 1939 or earlier	6,531	30.0%	22.5%

Source: US Census Bureau, State and County FactFinder from 2000 Census

Table C27: Interchurch Social Services county-wide provision of homelessness and housing assistance, 2001-2005

Year	Homeless: Number of requests that received hotel stays	Housing assistance: Number of households receiving rent or mortgage assistance
2001	173	449
2002	196	509
2003	169	420
2004	126	394
2005	104	355

Source: Interchurch Social Services (emergency assistance provider)

Table C28: The Salvation Army of Mount Vernon's provision of homelessness and housing assistance, 2000-2005

Year	Homeless: Transitional lodging and local homeless lodging	Housing: Rent assistance
2000	49	80
2001	44	56
2002	49	14
2003	172	3
2004	79	14
2005	154	19

Source: Salvation Army of Mount Vernon (emergency assistance provider)

Table C29: Knox Metropolitan Housing Authority Section 8 Housing Choice Voucher Program recipients and waiting list, 2001-2005

	Number	Percent
Total households served	1,538	NA
Total households on waiting list (applicants on inactive list)	2,900	NA
Families with children	1,665	57.4%
Elderly families	162	5.6%
Families with disabilities	779	26.9%

Source: Knox Metropolitan Housing Authority

Family violence, abuse of children and adults, and juvenile delinquency

Figure C10: Reports of child abuse and neglect in Knox County, 1995-2003 (unduplicated number of new reports)



Source: Public Children Services Association of Ohio (PCSAO) Factbooks, 1996-1997 through 2005-2006 editions

Table C30: Use of New Directions Domestic Abuse Shelter, 2002-2006

Fiscal year	Number of families sheltered at New Directions	Average number of nights sheltered	Families requesting shelter that were referred elsewhere
2002	46	16	35
2003	37	16	59
2004	26	25	88
2005	26	24	133
First half of FY 2006 (July 2005-January 2006)	4	88	104+

Source: New Directions Domestic Abuse Shelter, 2006

Table C31: Domestic violence reports and charges in Knox County, 1998-2005

	Reports only	Total charges
1998	69	105
1999	76	125
2000	53	154
2001	101	118
2002	97	150
2003	56	119
2004	32	143
2005	54	136

Source: New Directions Domestic Abuse Shelter, 2006

Table C32: Offenses* committed by juveniles, 2002-2005

Offense	2002	2003	2004	2005
Probation violation	138	78	115	88
Alcohol	64	86	60	82
Theft	60	50	38	80
Drug abuse	30	21	53	66
Assault	36	50	NA	48
Criminal damage	28	33	27	40
Disorderly conduct	30	28	25	41
Domestic violence	23	24	25	26
Criminal trespass	6	6	31	18
Arson	2	1	48	9
Drug possession	19	7	11	12

*Most common offenses

Source: Knox County Juvenile Court, 2006